

DAUPHIN ISLAND CAUSEWAY SHORELINE RESTORATION PROJECT

FACTSHEET

APRIL 2026

ISSUE #3

The Dauphin Island Causeway Shoreline Restoration Project goal is to restore critical marsh habitat and to increase the resilience of the Causeway, the Island's sole evacuation route.

The project spans 3.5 miles from Bayfront Park to Cedar Point. Over 150,000 tons of rock was placed to create segmented breakwaters, completed in September of 2024. These breakwaters are designed to provide critical wave protection to the Causeway.

From October 2024 to February 2026, the USACE Mobile District filled the area behind these breakwaters with 900,000 cubic yards of dredge material from the Mobile Harbor Deepening and Widening Project.

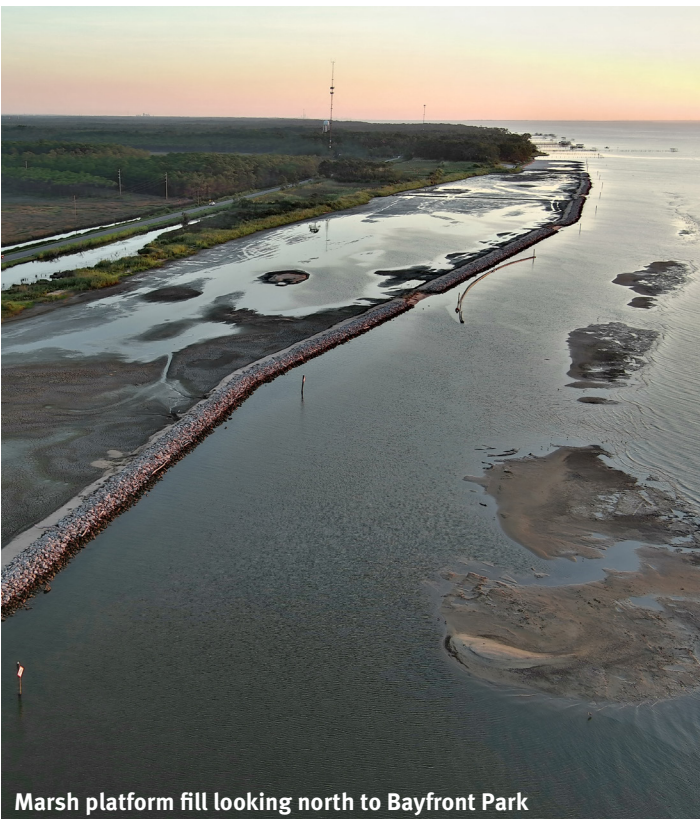
A 100 acres marsh platform was built with this beneficial use of dredged material. From Fall 2026 to Spring 2027, the marsh platform will be shaped into marsh habitat with tidal creeks, oyster shell, and plantings.

The beneficial use of dredged sediment that would otherwise be lost to offshore dumping is critical to keeping Mobile Bay's sediment resources in our system whilst restoring marsh that has been lost to erosion.



The Project is funded by the National Fish and Wildlife Foundation Gulf Environmental Benefit Fund and Emergency Coastal Resilience Fund to remedy harm from the *Deepwater Horizon* oil spill and to increase resilience of coastal infrastructure, respectively.

Questions about the project may be submitted to Mobile County Environmental Services at DICshoreline@mobilecountyal.gov



Marsh platform fill looking north to Bayfront Park



Rendering of what the site will look like in 3-5 years with tidal creeks and plants



Marsh platform fill south of Heron Bay cutoff (courtesy of the Dutra Group)

PROJECT PHASES

WHAT YOU'LL SEE AT THE PROJECT SITE

This project is being implemented in three phases:

PHASE 1

COMPLETED SEPTEMBER 2024

Mobile County Commission, through grant funding, constructed segmented breakwaters along 3.5 miles of the Causeway. The northern segment spans from Bayfront Park to Jemison's Bait Shop. The southern segment spans from Heron Bay Cutoff to Cedar Point. Temporary floatation access channels were required for equipment access (Figure 1). Side casted material for those access channels will degrade with time.

Figure 1: Phase 1 placement of segmented breakwaters



PHASE 2

COMPLETED OCTOBER 2024– FEBRUARY 2026

The USACE Mobile District placed 900,000 cubic yards of dredged sediment between the breakwaters and the Dauphin Island Causeway, with material sourced from the Choctaw turning Basin.

Sediment was transported via barge down the ship channel, and then pumped into the site through a pipeline.

A sand berm was constructed immediately adjacent to the breakwaters to provide additional containment and mimic the natural sand ridges observed in native marsh of Mobile Bay (Figure 2). Marsh fill was pumped behind the sand berm (Figure 3).

Figure 2: Phase 2 placement of sand berm



Figure 3: Phase 2 marsh platform fill beneficially placed by the USACE



PHASE 3

TO COMMENCE IN FALL 2026– SPRING 2027

The newly established marsh platform will then be enhanced into a more natural marsh habitat through creation of tidal creeks and planting of native marsh grasses.

Gaps in the breakwaters will allow for tidal flow in and out of the restored marsh, providing a nursery habitat for species such as shrimp, crabs, fish, and birds. The site will take approximately 3-5 years for the vegetation to fully establish (Figure 4).

Figure 4: Phase 3 rendering of project site once plants fully establish

