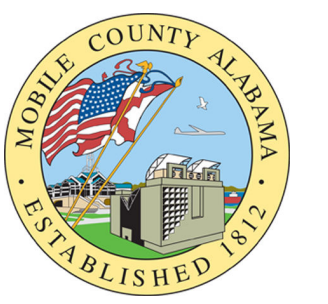
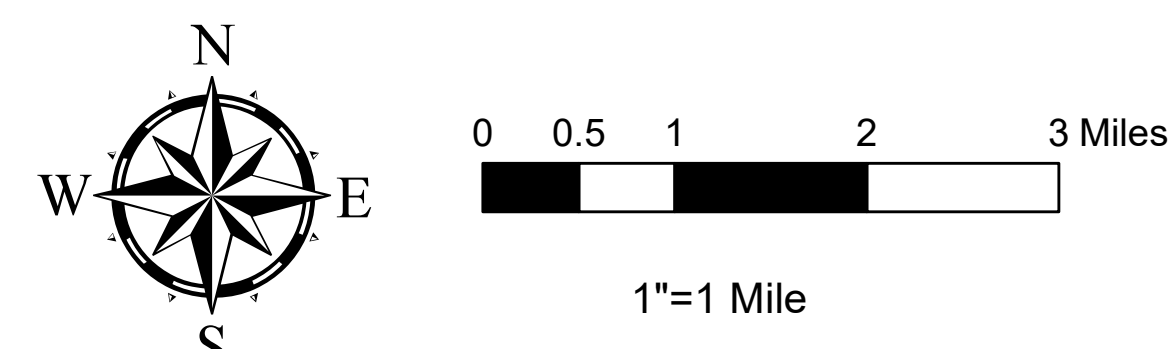


- Legend**
- SLOSH Category 1
 - SLOSH Category 2
 - SLOSH Category 3
 - SLOSH Category 4
 - SLOSH Category 5
- Mobile County Roads**
- County Paved
 - County Dirt
- State Roads**
- Interstate
 - State Highway
 - State Service Rd
- City Roads**
- City Paved
 - City Dirt
- Private Roads**
- Private Paved
 - Private Dirt
- Municipal Boundaries**
- Chickasaw
 - Citronelle
 - Creola
 - Mobile
 - Mt. Vernon
 - Prichard
 - Saraland
 - Satsuma
 - Semmes
 - Water Ways
 - Water Bodies



MOBILE COUNTY COMMISSION
 MOBILE GOVERNMENT PLAZA
 205 GOVERNMENT ST
 MOBILE, AL 36644
 PHONE (251) 574-8097
 WWW.MOBILECOUNTYAL.GOV

**Mobile County
 Storm Surge
 Northern Portion**
 Map Published on Date: 3/20/2023



Use this item at your own risk. Accuracy is not guaranteed for any reason. The material and information contained in this document is provided for general information only and should not be used for Legal, Engineering or Surveying purposes. Mobile County specifically disclaims all warranties, express or implied regarding this document. Mobile County is not liable and/or responsible for the consequences caused by or related to, in any way, the actions taken or not taken in reliance on this document.